

Proteas





Ayoba ® White Knight

Availability:
May, June, July



Barbigera

Availability:
August , September, October, November, December



Barbigera Ice Queen

Availability:
May, June, July , August , September



Barbigera Snow Princess

Availability:
July , August , September



Blushing Bride

Availability:
May, June, July, August, September, October



Brenda

Availability:
May, June, July , August



Cynaroides Ayoba® Arctic Ice

Availability:

March, April, June, July , August , September, October, November, December



Cynaroides Clare

Availability:

August, September, October, November



Cynaroides Madiba

Availability:

June, July , August , September, October



Cynaroides Pink

Availability:

January, February, march, April, May, June, July , August , September, October November, December



Cynaroides Red Rex

Availability:

August , September, October



Cynaroides Satin

Availability:

March, April, June, July , August , September, October, November, December



Cardinal

Availability:

January, February, March, April, May, June,



Carnival

Availability:

January, February, March, April, May, June



Ivy

Availability:

February, March, April



Empress

Availability:

June, July



Grandiceps

Availability:

June, July , August , September, October, November



Lady Di

Availability:

June, July , August



Liebencherry

Availability:
March, April, May



Limelight

Availability:
April, May, June



Nana

Availability:
June, July, August, September



Niobe

Availability:
April, May, June, July



Pink Ice

Availability:
February, March, April, May, June



Pink Lady

Availability:
May, June, July



Red Sensation

Availability:
August



Robyn

Availability:
April, May, June, July , August , September



Sharon

Availability:
June, July, August, September, October, November, December



Susara

Availability:
April, May, June, July



Sylvia

Availability:
January, February, March, April, May, June



Sheila

Availability:
June, July , August , September



Venus

Availability:

May, June, July, August, September, October,



Waratah

Availability:

September



White Pride

Availability:

April, May



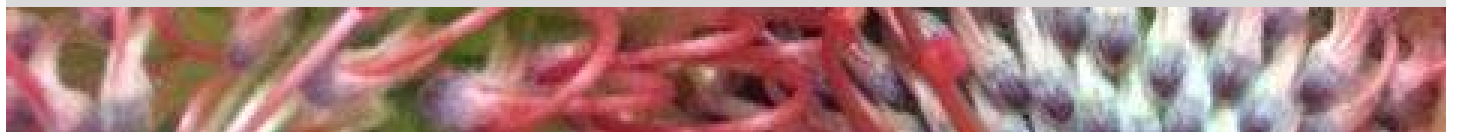
White Knight

Availability:

April, May, June, July



Leucospermum





Applekoos

Availability:
July, August



Ayoba® Orange

Availability:
August, September, October, November



Ayoba® Peach

Availability:
August, September



Blanche

Availability:
September, October, November



Empress

Availability:
August, September, October, November, December



Gold Dust

Availability:
August, September, October, November



Lesley

Availability:

August, September, October, November



Neena

Availability:

August, September, October, November



Queen Juliana

Availability:

August, September, October, November



Rigolette

Availability:

July, August, September, October



Soleil

Availability:

July, August, September, October



Succession

Availability:

June, July, August, September, October, November, December



Sunflame

Availability:

August, September, October, November, December



Tango

Availability:

June, July, August, September



High Gold

Availability:

August, September, October



Goldie

Availability:

October, November, December



Jelena

Availability:

September, October, November, December



Veld Fire

Availability:

August, September, October



Vlam

Availability:

August, September, October



Leucadendron



Ayoba® Kiss

Availability:

September, October, November, December



Blush

Availability:

January, February, March, April, May



Cape Spice

Availability:

October, November, December



Carlin

Availability:

September, October, November, December



Discolor Pom Pom Green

Availability:

October



Galpinii

Availability:

October, November, December, January



Gold Strike

Availability:

July, August, September, October



Chameleon

Availability:

October



Argenteum

Availability:

January, February, March, April, May, June, July, August, September, October, November, December



Aurora

Availability:

September, October



Ayoba® Sky

Availability:

October, November, December



Inca Gold

Availability:

April, May, June, July, August



Jade Pearl

Availability:

August, September, October, November



Jester

Availability:

April, May



Jubilee Crown

Availability:

October, November, December



Plumosum Female

Availability:

September, October, November, December



Plumosum Male

Availability:

August, September, October, November, December



Procerum

Availability:

April, May, June, July, August, September



Ruby Globe

Availability:

September, October, November, December



Ruby Pearl

Availability:

October, November, December



Safari Sunset

Availability:

January, February, March, April, May, June, July, August



Strictum

Availability:

October, November, December



Tinctum

Availability:

October, November, December



Blushed Pearl

Availability:

September, October, November, December



Coniferum

Availability:
September, October, November, December



Discolor Pom Pom Yellow

Availability:
October



Discolour Yellow Spray

Availability:
October



Pisa

Availability:
October, November, December



Red Tag

Availability:
October, November



Mountain Rose

Availability:
April, May, August, September, October



Sand Dollar

Availability:
October, November



Silver Pearl

Availability:
November, December



Ulka

Availability:
April, May, October, November



Cumosum

Availability:
November, December



Platy Star

Availability:
October, November, December



Platyspermum

Availability:
March, April, May, June, July, August, September, October, November, December



Rosette

Availability:

August, September, October, November, December



Pubescens

Availability:

September, October, November, December



Sabulosum

Availability:

November, December



Greens





Agathosma

Availability:

September, October



Albigreen

Availability:

March, April, May, June, July, August, September



Aspalathus

Availability:

January, February, March, April, May, June, July, August, September, October, November, December



Berzelia Lanuginosa Green

Availability:

March, April, May, June, July, August



Berzelia Lanuginosa Tint

Availability:

October, November, December, January, February



Berzelia Palaecea Tint

Availability:

January, February, March, April, May, June, July, August



Berzelia Palaecea

Availability:

April, May, June, July, August



Berzelia White

Availability:

September, October, November



Brunia Albiflora Young

Availability:

October, November



Brunia Albiflora

Availability:

November, December, January, February



Brunia Silver Moon

Availability:

January



Buxifolia

Availability:

May, June, July, August, September, October, November



Cluster Stars

Availability:
April, May, June



Cordata Leaves

Availability:
September, October, November, December, January



Cotton Bush

Availability:
April, May, June, July, August



Galpinii Female

Availability:
November, December



Metalasia Natural

Availability
February, March, April, May, June, July, August, September, October



Murii (Astolle)

Availability:
October, November, December



Nebelia

Availability:

August, September, October, November, December



Paranomus

Availability:

January, February, March, April, May, June, July, August



Red Brunia

Availability:

August, September, October, November



Retzia Carpensis

Availability:

August, September, October, November, December



Spray Brunia

Availability:

January, February, September, October, November, December



Tortum Male

Availability:

August, September, October, November, December



Tortum Female

Availability:

January, February, December



Stoebe

Availability:

March, April, May, June, July, August, September, October, November, December



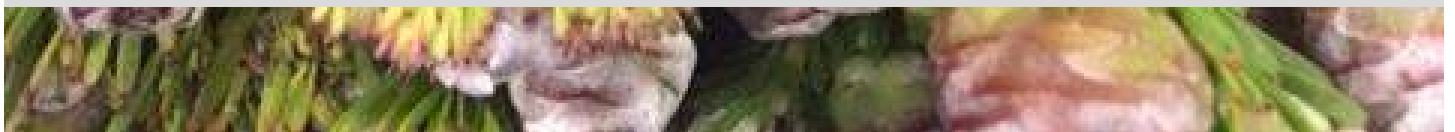
Strawberry Berzelia

Availability:

August, September, October, November, December



Flowering Greens





Agathosma

Availability:

September, October, November, December



Berzelia Lanuginosa Tint Orange

Availability:

May, June, July, August



Berzelia Palaecea Tint

Availability:

May, June, July, August



Berzelia Palaecea Young

Availability:

May, June, July, August



Brunia Albiflora tint

Availability:

January, February, November, December



Brunia Silver Tint

Availability:

June, July, August, September, October, November, December



Cluster Stars

Availability:

April, May, June



Cotton Bush Tint

Availability:

March, April, May



Cotton Bush

Availability:

March, April, May



Diosma

Availability:

January, February, March



Erica Bicolour

Availability:

May, June, July, August, September, October, November, December



Erica Coccinia

Availability:

August, September, October, November, December



Erica Cyathiformis

Availability:

August, September, October, November, December



Erica Daphniflora

Availability:

February, March, April, May, June, July, August, September, October, November, December



Erica Four Sisters

Availability:

September, October, November, December



Erica Melanthera

Availability:

February, March, April, May, June, July, August, September, October, November, December



Erica Ovina pink

Availability:

February, March, April, May, June, July, August, September, October, November, December



Erica Plukenetti

Availability:

February, March, April, May, June, July, August, September, October, November, December



Erica Prince of Wales

Availability:

February, March, April, May, June, July, August, September, October, November, December



Lambtails Natural

Availability:

January, February, November, December



Lambtails Tint

Availability:

January, February, November, December



Metalasia Natural

Availability:

January, February, March, April, May, June, July, August



Metalasia Tint

Availability:

January, February, March, April, May, June, July, August



Paranomus

Availability:

January, February, March, April, May, June, July, August



Phaenocoma Tint

Availability:

January, February, March, April, May, June, July, August



Phylica Ericoides

Availability:

March, April, May, June, July, August



Rock Phylica Natural

Availability:

March, April, May, June, July, August



Rock Phylia Tint

Availability:

March, April, May, June, July, August



Staavia

Availability:

March, April, May, June, July, August, September, October, November, December



Staavia Tint

Availability:

March, April, May, June, July, August, September, October, November, December



Stoebe

Availability:

March, April, May, June, July, August, September, October, November, December



Stoebe Tint

Availability:

March, April, May, June, July, August, September, October, November, December



Woolbush

Availability:

August, September, October, November, December



Standard Bouquets



1 Protea BQ

Availability:

January, February, March, April, May, June, July, August, September, October, November, December*



1 Protea BQ Tint

Availability:

January, February, March, April, May, June, July, August, September, October, November, December*



2 Protea BQ

Availability:

January, February, March, April, May, June, July, August, September, October, November, December*



2 Protea BQ Tint

Availability:

January, February, March, April, May, June, July, August, September, October, November, December*



3 Protea BQ

Availability:

January, February, March, April, May, June, July, August, September, October, November, December*



3 Protea BQ Tint

Availability:

January, February, March, April, May, June, July, August, September, October, November, December*

*Product Variety may differ



Cape Mix Natural

Availability:

January, February, March, April, May, June, July, August, September, October, November, December*



Cape Mix Tint

Availability:

January, February, March, April, May, June, July, August, September, October, November, December*



Mandarin

Availability:

January, February, March, April, May, June, July, August, September, October, November, December*



Maypole

Availability:

January, February, March, April, May, June, July, August, September, October, November, December*



Mountain Mix

Availability:

January, February, March, April, May, June, July, August, September, October, November, December*



Periwinkle

Availability:

January, February, March, April, May, June, July, August, September, October, November, December*

*Product Variety may differ



River Mix

Availability:

January, February, March, April, May, June, July, August, September, October, November, December*



Summermorn

Availability:

January, February, March, April, May, June, July, August, September, October, November, December*



Wildflower

Availability:

January, February, March, April, May, June, July, August, September, October, November, December*

***Product Variety may differ**



Cymbidiums



Cymbidium Brown

Availability:

June, July, August, September, October



Cymbidium Dark Pink

Availability:

June, July, August, September, October



Cymbidium green

Availability:

June, July, August, September, October



Cymbidium light pink

Availability:

June, July, August, September, October



Cymbidium Maroon

Availability:

June, July, August, September, October



Cymbidiums Mixed

Availability:

June, July, August, September, October



Cymbidiums Red

Availability:

June, July, August, September, October



Cybidiums White

Availability:

June, July, August, September, October



Cymbidiums Yellow

Availability:

June, July, August, September, October



Ferns and Grasses



Bare Steppen Grass

Availability:

June, July, August, September, October



Bell Reed

Availability:

January, February, March, April, May, June, July, August, September, October, November, December



Coral Fern

Availability:

January, February, March, April, May, June, July, August, September, October, November, December



Eucalyptus Berries

Availability:

January, February, March, April, May, June, July, August, September, October, November, December



Eucalyptus Penny Gum

Availability:

February, March, April, May, June, July, August



Honey Bush

Availability:

March, April, May, June, July, August, September



Minora Grass

Availability:

January, February, March, April, May, June, July, August, September, October, November, December



Pokers

Availability:

February, March, April, May, June, July, August



Rumhora Fern

Availability:

February, March, April, May, June, July, August, September, October, November, December



Silk- Seed Koala

Availability:

December, January, February, March, April, May, June, July, August, September



Virginia Reed

Availability:

January, February, March, April, May, June, July, August, September, October, November, December



Geraldton Wax



Adi

Availability:
June



Atar White

Availability:
June, July, August



Ayelet Light Pink

Availability:
September, October



Chantilly Lace

Availability:
October



Dancing Queen Pink

Availability:
August, September



Eden

Availability:
August



MB Violet Purple

Availability:

June, July, August, September



MB Orchid Pink

Availability:

June, July, August, September



Michel Pink

Availability:

July, August, September, October, November



Moonlight Delight

Availability:

July, August, September



My Sweet Sixteen

Availability:

September, October, November



Maya White

Availability:

May, June



Nir

Availability:
June, July



Pearl Buttons

Availability:
October, November



Raspberry Ripple

Availability:
August, September, October



Revelation

Availability:
September



Rotem

Availability:
May, June, July



Sarah's Delight

Availability:
July, August



Strawberry Surprise

Availability:

July, August, September



Snowflake

Availability:

October, November



Wax Pink Cross

Availability:

October



Wendy

Availability:

August, September, October